

Crafco's HP ER Cold Patch and Enhancer Program Offers Streamlined Application, Production

When a pothole or crack appears in a busy roadway, time is of the essence for road maintenance workers tasked with tackling the job. Having an asphalt patching product on hand that stores well, is easy to apply and workable in any weather condition, is crucial so that the job gets done quickly - and performs well.

For agencies seeking an affordable, efficient and high-performance asphalt patching solution, Crafco's HP ER Cold Patch is a strong option. The ready-to-use, zero-VOC material is formulated for all-weather use and adheres well in cold and damp pavements. It's designed for repairing utility cuts, potholes, wide cracks and other deficiencies in both asphalt and concrete pavements, including everything from highways to bridge decks to walkways as well as sports courts. With no mixing, heating or special equipment required, HP ER Cold Patch is designed to help agencies complete patch jobs as efficiently as possible. After application and tamping, the product gains its full strength with compaction from traffic.

Crafco's cold patch solution offers benefits for end users and producers alike. Read on to hear success stories from the contractors applying HP ER Cold Patch to roadways and the producers that get the process started at the plant.

INSTALLATION IN EDMOND, OK

Crafco's HP ER Cold Patch solution has proved successful in the City of Edmond, Oklahoma, where residents have high expectations when it comes to timely road repairs. The Street and Traffic Division, primarily tasked with patching roadways, has been using Crafco's cold patch product for around 8-10 years. Herb Mason, assistant superintendent for field services, says when the department was looking for a new patching solution, workability in all weather conditions was a top consideration.



Repaired pothole with High Performance ER Cold Patch.

“The way we usually utilize this cold patch product is after we’ve had a weather event, we will send out multiple pickups with this product in the back of it to get those small potholes before they become big ones,” Mason said. “The patch really stays, it sticks good and it doesn’t pop out of the hole when people drive across it.”

Along with the performance in cold and wet conditions, Mason said the long shelf life of the HP ER Cold Patch has served his division well. Since Edmond residents expect new potholes to be repaired within 24 hours, Mason’s team needs to have plenty of ready-to-use asphalt cold patch available whenever the need arises. CrafcO’s product doesn’t harden before use or need to be kept warm, so it’s easy for end users like Mason to stockpile large quantities for months without upkeep.

“By having material in the yard, if you’re going through some of it on a regular basis, you can have enough for an emergency repair on a weekend or whatever time it might come up,” he said.

With HP ER Cold Patch, Mason’s division is able to make one-time repairs that will last several years without extra maintenance.

THE HP ER ENHANCER PROGRAM

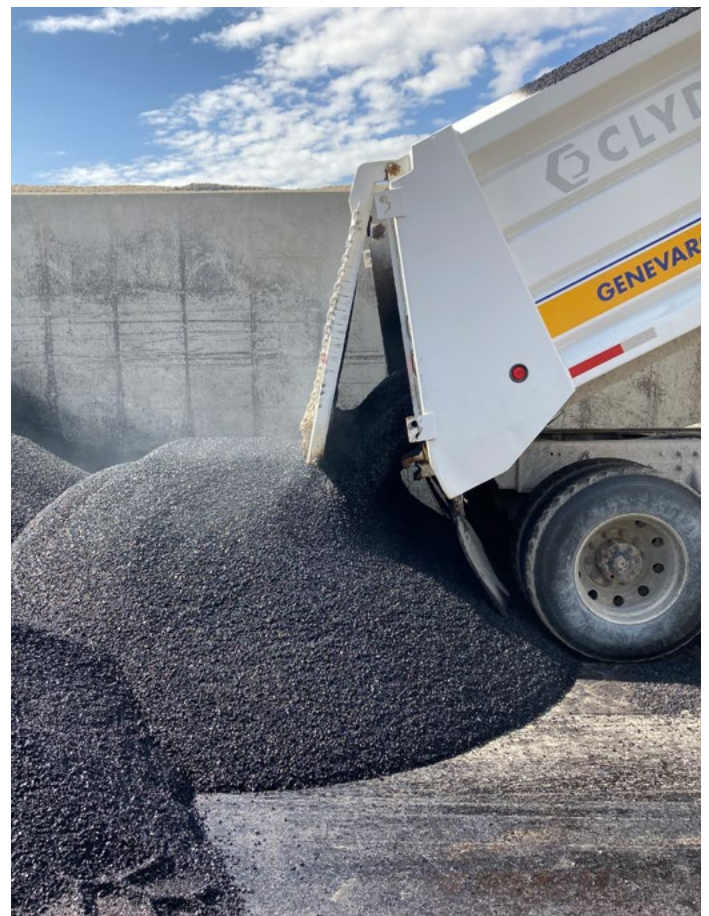
CrafcO’s solution brings significant benefits not only for end users, but for producers as well. To ensure an efficient and profitable process getting the cold patch from the plant to the roadway, CrafcO offers its HP ER Enhancer program to cold patch producers. HP ER Enhancer is an organic viscosity modifier designed to blend with asphalt to produce CrafcO’s HP ER Binder for cold patch production.

CrafcO packages its HP ER Enhancer in premeasured totes that are ready for producers to add to paving grade asphalt. Following the guidance provided by CrafcO, producers are able to create an eco-friendly asphalt binder that’s safe to work with, cost-effective, and garners positive reviews from end users.

SUPPLIER BENEFITS: SAFETY AND A STREAMLINED PROCESS

For Geneva Rock, a supplier based in Salt Lake City, Utah, the HP ER Enhancer program has been profitable since the company made its first batch of the cold patch material in September 2021. Asphalt salesman Cody Mills said prior to working with CrafcO, previous attempts at making cold patch were too cumbersome, involving tedious reprocessing and drying steps.

“When CrafcO developed their HP ER and we could have totes of their material on hand that we just plug right into our asphalt plant and then make it like regular asphalt, that streamlined the whole process and made it so easy to use,” Mills said. “Speaking with our asphalt plant operators, they were blown away by how easy the process was compared to what it used to be.”



Bulk HP ER production.

Success Story

Mills said one of the reasons Geneva Rock stepped away from cold patch production in the past came down to safety concerns and a lack of payoff for the risk involved with using flammable materials. With Crafcó's non-VOC product, plant workers have peace of mind knowing they can blend it in a hot plant without risk of flash.

Customer feedback has also been positive.

"Reviews of it have been great," Mills said. "We've had guys say that they're not going to buy anything else after they've used it."

ECO-FRIENDLY BENEFITS AND SUPPORT

At APAC, a producer with locations across Kansas, Crafcó's HP ER Enhancer program has provided cost savings and environmental benefits. Branch manager of

the Shears division, Dave Duncan, said he's found the product's shelf life to be particularly impactful, allowing the business to sell all of what they make. Duncan has also been impressed with the eco-friendly nature of Crafcó's cold patch solution.

"There are fuels in these oils to make them last longer," he said. "Well, this is a biofuel, so it's not hazardous and it's much better for the environment. Our company is always looking for ways to be more environmentally friendly. I think if a lot of the customers in some of the cities knew some of this stuff, they would probably start buying it more."

Duncan adds that since he can produce this cold patch product at a lower temperature, APAC is able to coat all of the aggregate while saving fuel in their burner. The result is lowered emissions during the production process.

At APAC's Wichita and Augusta locations, estimator and plant manager Stewart Randall said Crafcó's partnership and support has been valuable. Along with being easy to get ahold of, Crafcó's team offers on-site guidance during the mixing process to ensure the product is up to their standards.

Randall's main focus when choosing to produce Crafcó's cold patch solution was longevity. After being able to stockpile the product for 6-9 months, the business has more than delivered on that front, along with delivering cost savings.

Ultimately, Crafcó's HP ER Enhancer program is helping asphalt producers and end users streamline their processes, offering cost savings, environmental benefits and safety improvements from the plant to the job site. For more information, [visit www.crafcó.com](http://www.crafcó.com).



Blending analysis being performed by Crafcó Support Team.