



#3405 PARKING LOT SEALANT

NO. JTS-007
REVISION: 001

DESCRIPTION

#3405 PARKING LOT SEALANT is formulated with selected asphaltic resins, synthetic polymeric rubber, plasticizers, stabilizers, and a blend of organic reinforcing fillers. This economical material is a hot applied, one part sealer that provides excellent results under extremely difficult conditions.

#3405 PARKING LOT SEALANT is designed specifically for asphalt pavements experiencing a high degree of pedestrian foot traffic and the action of power steering twisting and turning.

- Will not track or pick-up
- Resists scuffing from power steering
- Foot traffic friendly

SPECIFICATIONS

- ASTM D 6690, type I & II
- ASTM D-3405
- AASHTO M-301
- FAA P-605

TYPICAL PROPERTIES

Recommended pour temperature.....	370° F
Maximum heating temperature.....	390° F
Recommended extended heating.....	6 Hours
Penetration (150gr/5 sec.).....	.90 max
Flow at 140° F.....	3 mm max
Softening Point.....	176° F min
Bond (-20° F/50% ext).....	Passes 3 cycles
Asphalt compatibility.....	Compatible

USE AND APPLICATIONS

#3405 PARKING LOT SEALANT is recommended for sealing of joints and cracks in asphaltic pavements and parking lots. It is designed for use in sealing expansion and contraction joints as well as random cracks.

- City streets
- Parking lots
- Walk ways

FEATURES AND BENEFITS

- Economical quality joint and crack sealing compound for asphaltic pavements
- Cost effective preventative maintenance treatment
- Seals cracks and joints from water penetration

EQUIPMENT

Use an agitated oil-jacketed unit that has separate temperature gauges for both the sealant and the heat transfer fluid. Take the 30 lb plastic bag of sealant and load into the kettle one at a time. Melt only enough material for the day's activities. Once melted, additional material can be added as needed. Material can be safely reheated within the sealants service life.

NOTE: Prolonged heating of the sealant above the maximum safe heating temperature may cause it to gel in the kettle.

PREPARATION

To facilitate proper adhesion, the joint or crack should be dry and clear of any dirt, dust or other contaminants. Substrate and ambient temperatures must be 40° F or above. Proper sizing of the joint will cause the maximum extension/compression to not exceed 50% of the width. Joints or random cracks of 1/4" or less are difficult to properly clean prior to applying the sealant.

SERVICE LIFE

The service life (pot-life) at application temperatures is approximately 12 hours. Adding fresh material to the melter as sealant is being used will extend the service life. Material that has been overheated can thicken and gel in the melter. Any material that has exceeded the service life should be removed from the melter and discarded.

COVERAGE

Width	Depth	Pounds/100 lineal feet
3/8"	3/8"	6.9
3/8"	1/2"	9.3
1/2"	1/2"	12.3
1/2"	1"	24.7
3/4"	1/2"	18.6
3/4"	1/2"	27.8

PACKAGING

60# CARTON (2 SPLIT 30# CUBES)
36 CARTONS PER PALLET

35# CARTON
60 CARTONS PER PALLET

30# NO BOX TRI-BLOCK UNIT
65 UNITS PER PALLET



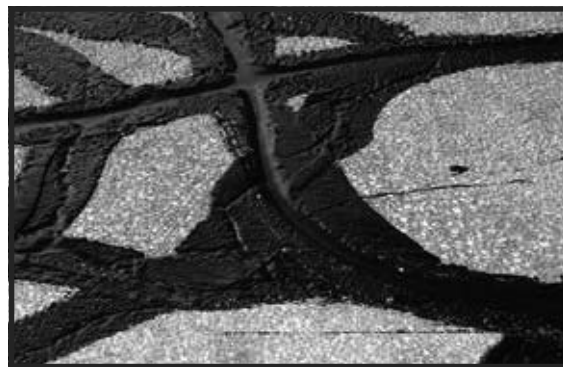
Patent Pending

TECHNICAL SERVICE

For conditions not specified, application procedures not noted, contact: Right Pointe Company (888) 755-5700.

LIMITED WARRANTY

Every reasonable effort is made to apply RIGHT POINTE COMPANY exacting standards both in the manufacture of our products and in the information which we issue concerning these products and their use. We warrant our products to be of good quality and will replace or, at our election, refund the purchase price of any products proved defective. Satisfactory results depend not only upon quality products, but also upon many factors beyond our control. Therefore, except for such replacement or refund, RIGHT POINTE COMPANY MAKES NO WARRANTY OR GUARANTEE, EXPRESS OR IMPLIED, INCLUDING WARRANTIES OF FITNESS FOR A PARTICULAR PURPOSE OR MERCHANTABILITY, RESPECTING ITS PRODUCTS, and RIGHT POINTE COMPANY shall have no other liability with respect thereto. Any claim regarding product defect must be received in writing within one (1) year from the date of shipment. No claim will be considered without such written notice or after the specified time interval. User shall determine the suitability of the products for the intended use and assume all risks and liability in connection therewith. Any authorized change in the printed recommendations concerning the use of our products must bear the signature of the RIGHT POINTE COMPANY Technical Manager.



Right / Pointe Company

234 Harvestore Dr., Dekalb, IL 60115 • toll free: 888.755.5700 • office: 815.754.5700 • fax: 815.754.5702 • www.rightpointe.com

REVISED: 05/02/16

PRODUCT DATA SHEET